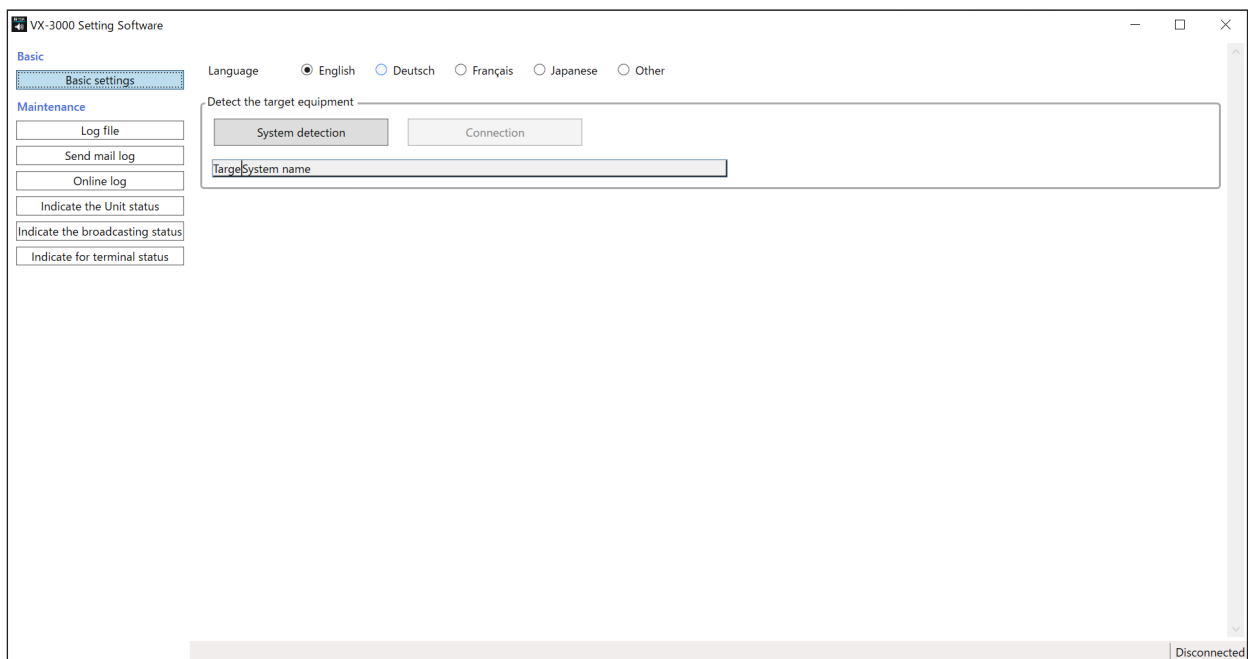




## SETTING SOFTWARE INSTRUCTIONS

For Authorized End User

# INTEGRATED VOICE EVACUATION SYSTEM VX-3000 SERIES



### Tip

In this manual, the VX-3004F/3008F/3016F Voice Evacuation Frames are collectively referred to as "VX-3000F."

Thank you for purchasing TOA's Integrated Voice Evacuation System.  
Please carefully follow the instructions in this manual to ensure long, trouble-free use of your equipment.

# TABLE OF CONTENTS

<b>1. SOFTWARE OUTLINE</b>	3
<b>2. NOTES ON PERFORMING SETTINGS</b>	3
2.1. System Requirements	3
2.2. Notes	3
<b>3. SOFTWARE SETUP</b>	4
3.1. Setting Software Installation	4
3.2. Uninstallation	6
<b>4. STARTING THE VX-3000 SETTING SOFTWARE</b>	7
<b>5. ITEM BUTTON</b>	8
<b>6. BASIC SETTINGS</b>	9
6.1. Basic Settings Screen	9
6.2. VX-3000 System Detection and Connection	10
<b>7. MAINTENANCE</b>	11
7.1. Log File	11
7.2. Send Mail Log	15
7.3. Online Log	16
7.4. Indicate the Unit Status	19
7.5. Indicate the Broadcast Status	22
7.6. Indicate for Terminal Status	24

# 1. SOFTWARE OUTLINE

This software is a PC software designed for exclusive use with the VX-3000 system. It allows a user to monitor the unit state or acquire log data by establishing the connection with the device via a network.

## 2. NOTES ON PERFORMING SETTINGS

### 2.1. System Requirements

- OS: Windows 7 (32 bit/64 bit), Windows 8.1 (32 bit/64 bit), Windows 10 (32 bit/64 bit)
- Required Component: Microsoft .NET Framework 4.5.2 (when the OS is Windows 7 or Windows 8.1)
- CPU: 1 GHz or faster
- Memory: Over 1 GB for the 32-bit OS or over 2 GB for the 64-bit OS

#### **Note**

Microsoft and Windows are the registered trademarks of Microsoft Corporation in the United States and other countries.

### 2.2. Notes

#### 2.2.1. Displays

The VX-3000 Setting software creates window displays at a resolution of 1024 x 768 pixels. Setting the screen size to a lower resolution or resizing windows may cause a portion of display to be hidden or cut off.

#### 2.2.2. Window screens

The windows displayed by the VX-3000 Setting software in this manual are examples and may vary somewhat depending on the specific environment of the PC used.

### 3. SOFTWARE SETUP

#### Notes

- Close all open applications before installing.
- To install the software, it is necessary to log in to the PC using an administrator account.

#### 3.1. Setting Software Installation

**Step 1.** Click on "setup.exe" in the setting software folder contained in the CD supplied with the VX-3000F. The installation wizard screen is displayed.

#### Note

The installation wizard screen may not be displayed. In this case, read [the next page](#).

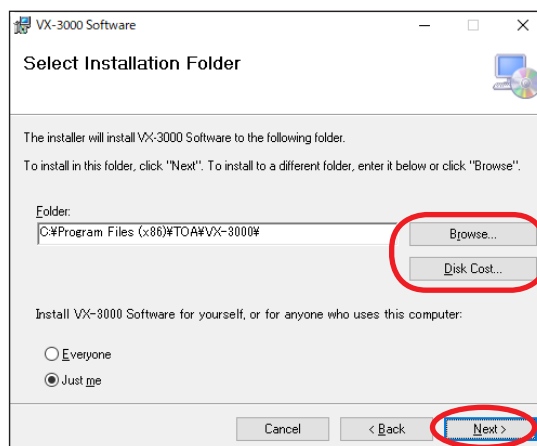
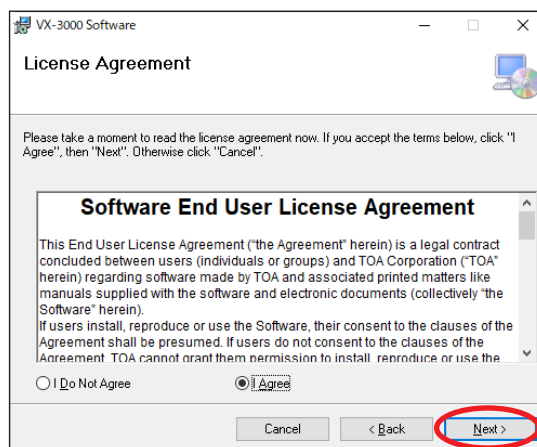
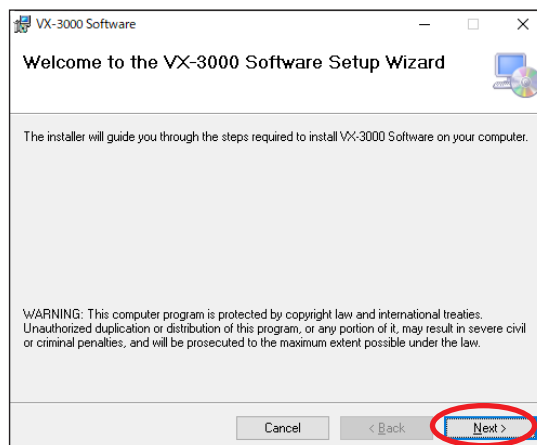
**Step 2.** Click the Next button.

The License Agreement screen is displayed. Check the contents of the License Agreement, then choose the "I Agree" or "I Do Not Agree" radio button. Choosing "I Agree" allows to click the Next button.

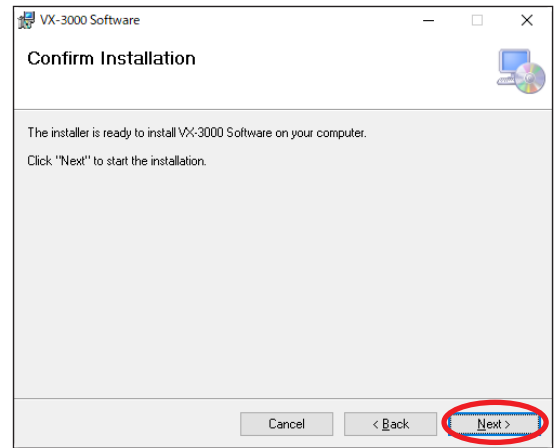
**Step 3.** Click the Next button.

The Select Installation Folder screen is displayed.

**Step 4.** Change the folder as needed, then click the Next button.

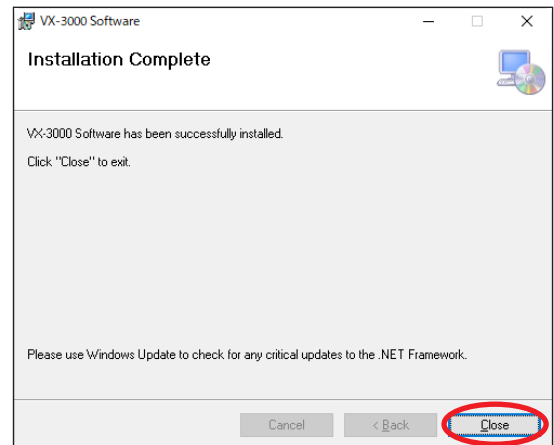


The Confirm Installation dialog is displayed.



**Step 5.** Click the Next button to start installing the software.

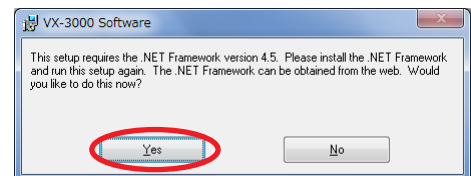
**Step 6.** When the Installation Complete dialog is displayed, click the Close button to complete the installation.



**[If no installation wizard screen is displayed]**

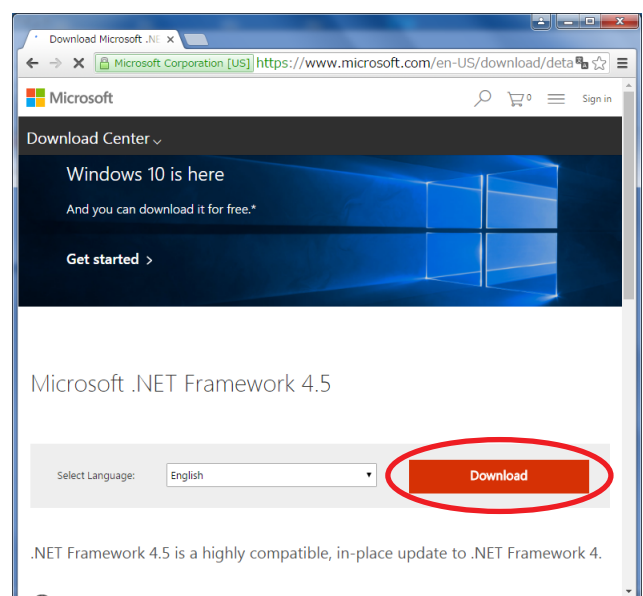
The screen at right may be displayed when the **Step 1** is performed. In this case, install the software needed to run the VX-3000 Setting software with the steps below.

**Step 1.** Click the Yes button.



Download site is displayed.

**Step 2.** Download the software according to its instructions.



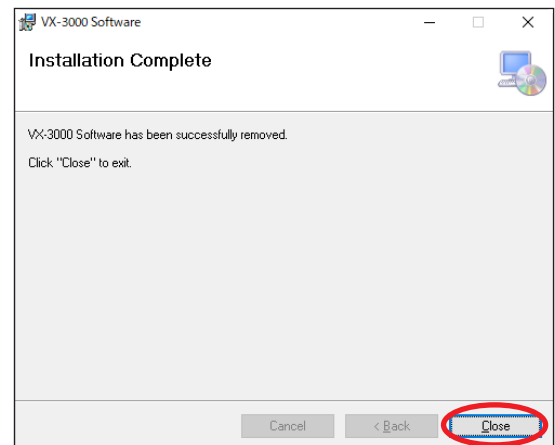
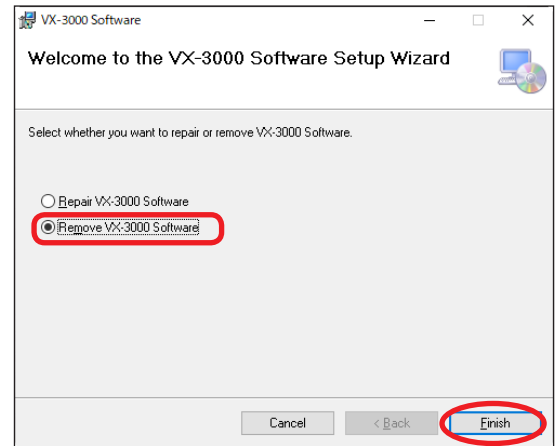
As the installation wizard screen is displayed after completion of installation, follow the steps shown on [the previous page](#).

## 3.2. Uninstallation

**Step 1.** Click on "setup.exe" in the setting software folder contained in the CD supplied with the VX-3000F. The setup wizard screen is displayed.

**Step 2.** Select "Remove VX-3000 Software," and click the Finish button to start uninstalling the software.

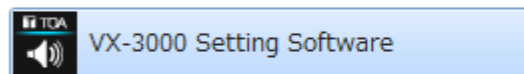
**Step 3.** When the Installation Complete dialog is displayed, click the Close button to complete the uninstallation.



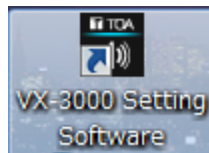
## 4. STARTING THE VX-3000 SETTING SOFTWARE

**Step 1.** Select "VX-3000 Setting Software" from the Start menu, or double-click the VX-3000 Setting Software shortcut icon on the desktop.

Start menu

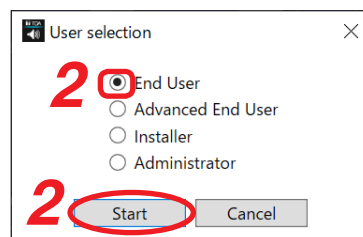


Shortcut icon on the desktop

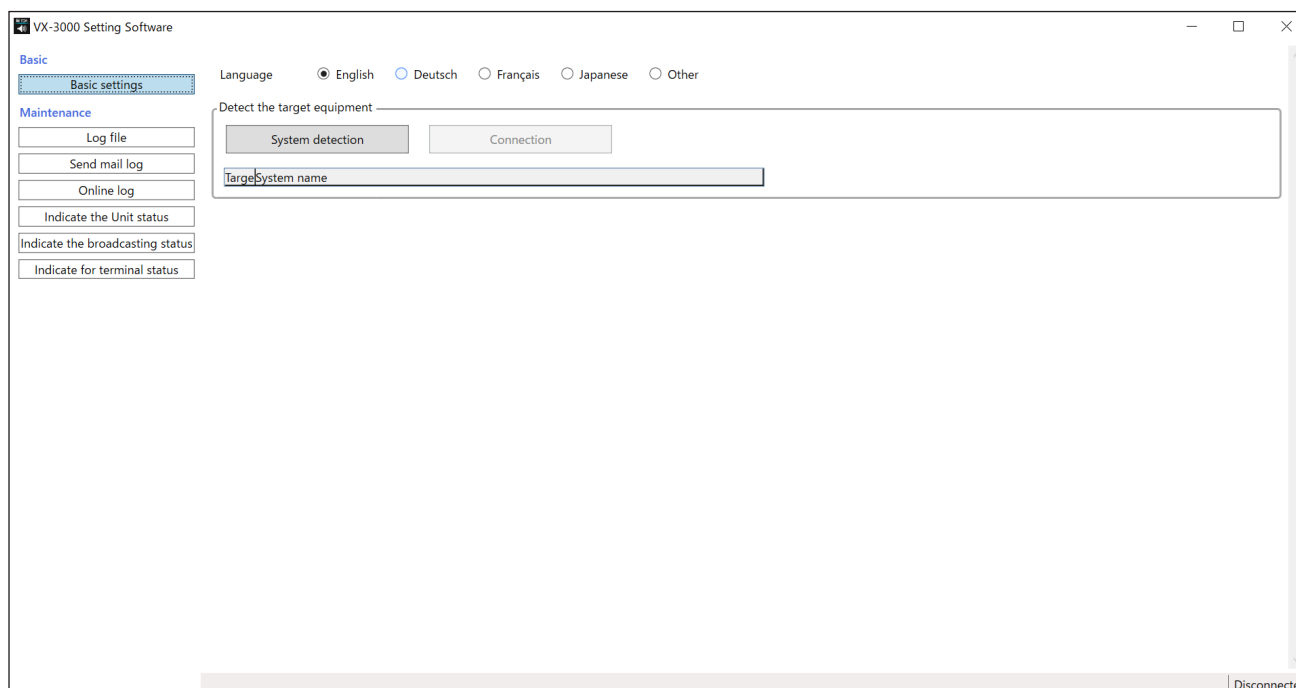


A user selection dialog appears.

**Step 2.** Select "End User," then click the Start button.



The VX-3000 Setting software starts as an End user authority and the screen below will be displayed.

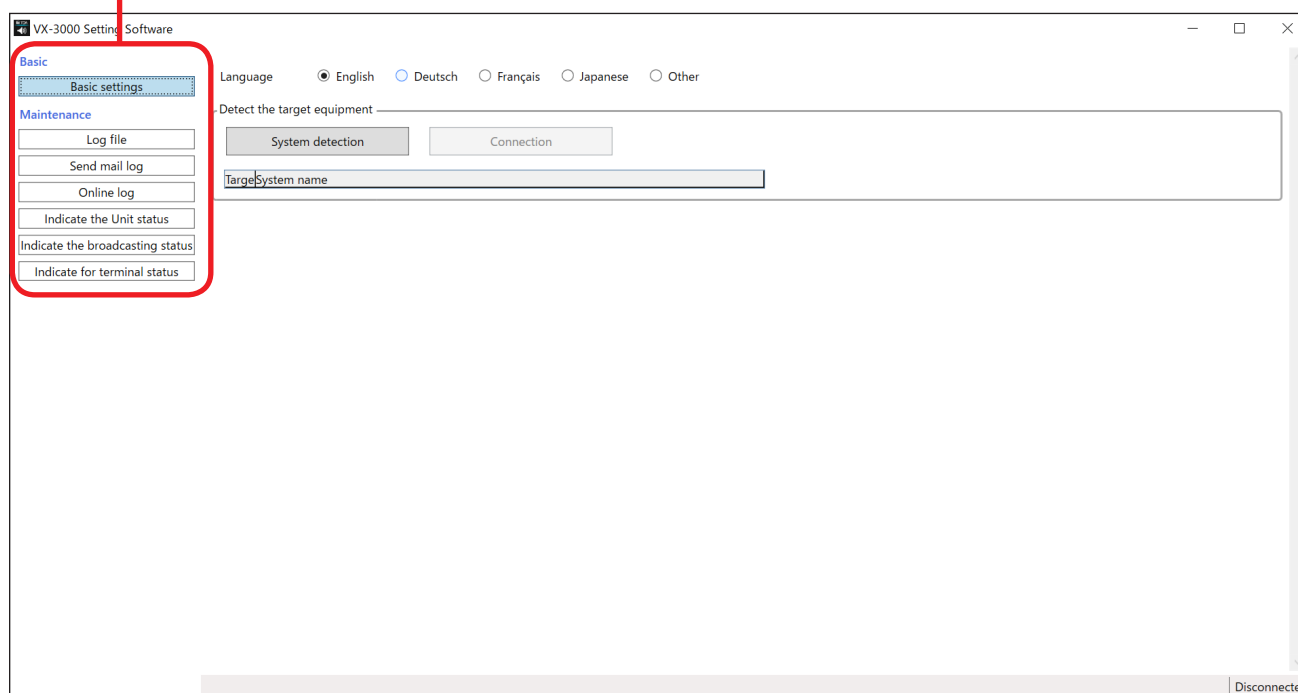


## 5. ITEM BUTTON

Item buttons are located in the left side portion of the screen.

Clicking on each item button displays the corresponding screen in the main area in the right side portion of the item buttons.

Item Buttons



### 5.2.1. Basic

Basic settings:

Language: Select the displayed language.

Detect the target equipment: Detects and establishes communication with the network-connected VX-3000F, then reads the log file, etc. from the VX-3000F.

### 5.2.2. Maintenance

Log file: Displays the outputs log data. (See [p. 11.](#))

Send mail log: Displays the log data of the transmitted surveillance e-mails. (See [p. 15.](#))

Online log: Displays log data online. (See [p. 16.](#))

Indicate the Unit status: Displays system configuration or failure status online. (See [p. 19.](#))

Indicate the broadcasting status: Displays audio input and output status online. (See [p. 22.](#))

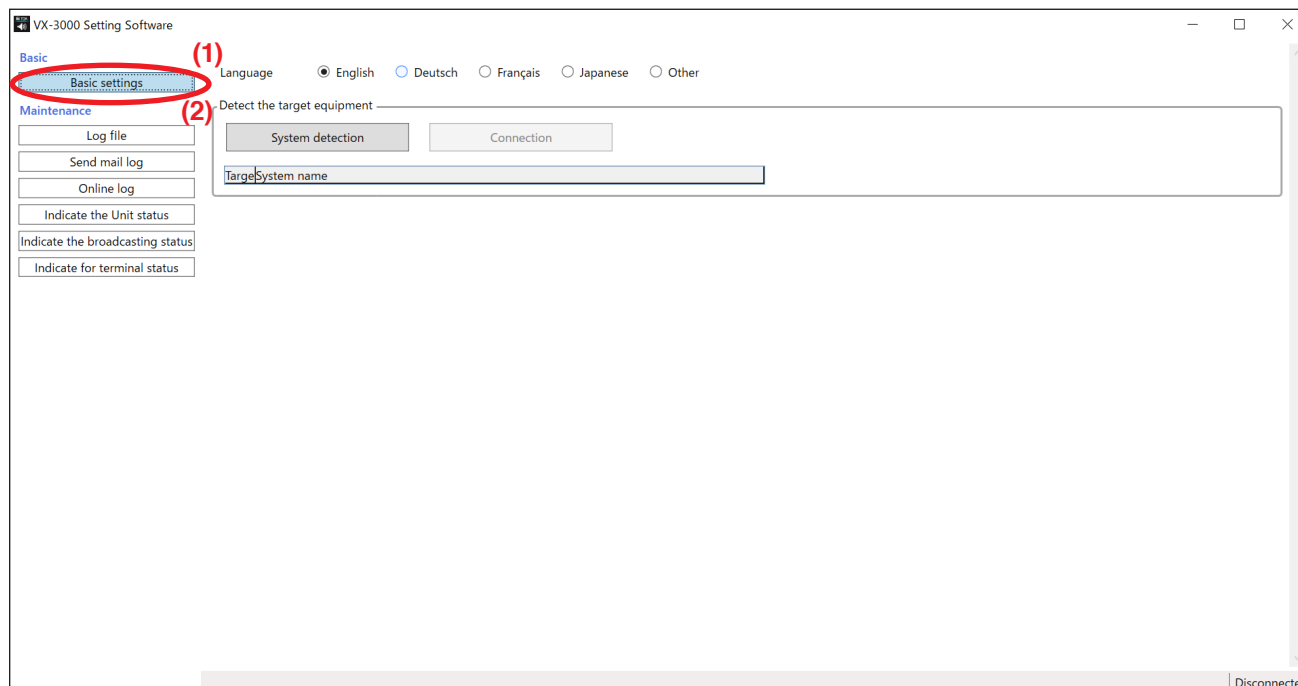
Indicate for terminal status: Displays control input and output status online. (See [p. 24.](#))



## 6. BASIC SETTINGS

### 6.1. Basic Settings Screen

Clicking the Basic settings button displays the screen below.



#### (1) Language

Select the language to use.

Available Settings	English (default), Deutsch, Français, Japanese, Other
--------------------	---

#### Note

"Other" language can be set freely according to your needs.  
Contact your nearest TOA dealer regarding the setting method.

#### (2) Detect the target equipment

##### • System detection button

Detects the VX-3000 systems connected to the local network and displays them in the Target system selection table. When the number of the detected systems is one, a connection is automatically established to that system.

##### • Connection/Disconnect button

The Disconnect button becomes valid after the establishment of a connection when a single VX-3000 system is detected.

The Connection button becomes valid when multiple VX-3000 systems are detected.

Select the target system by its name and establishes communications with it.

##### • Target system selection table

Detected VX-3000 system names are displayed.

When multiple VX-3000 systems are detected, select the system to which the whole maintenance function is made with a radio button in the target field.

## 6.2. VX-3000 System Detection and Connection

Detect the VX-3000 systems connected to the local network and select one to connect to.

### Note

The VX-3000 Setting software cannot be used to write settings information to units if their IP addresses are not correctly set using the TOA Finder.

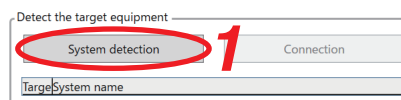
#### Step 1. Click the System detection button.

The VX-3000 systems connected to the local network are detected and displayed in the Target system selection table.

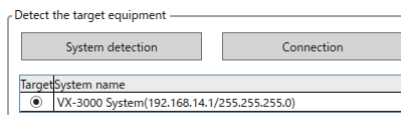
When the number of the detected systems is one, a connection is automatically established to that system. In this case, proceed to **Step 4**.

When multiple VX-3000 systems are detected, proceed to **Step 2**.

When no system is detected, an error dialog appears. Check cable connections, then retry **Step 1**.

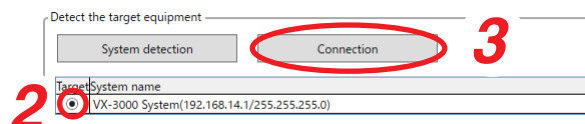


(Example when the number of the detected systems is one)



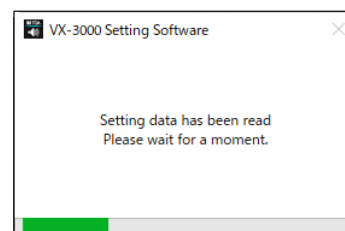
#### Step 2. When multiple VX-3000 systems are detected, select the VX-3000 system to connect to.

Click the radio button in the "Target" field to select the VX-3000 system to connect to.



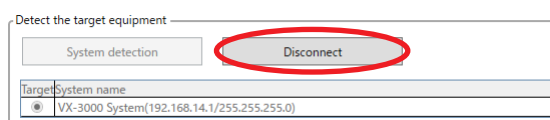
#### Step 3. Click the Connection button.

A connection is established and the screen at right will appear.



#### Step 4. Confirm the connection result.

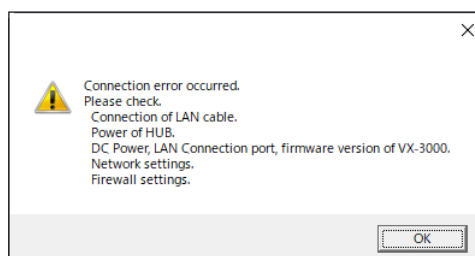
When the connection is correctly established, the Connection button changes to the Disconnect button.



### Note

When connection is not enabled, the screen at right will appear.

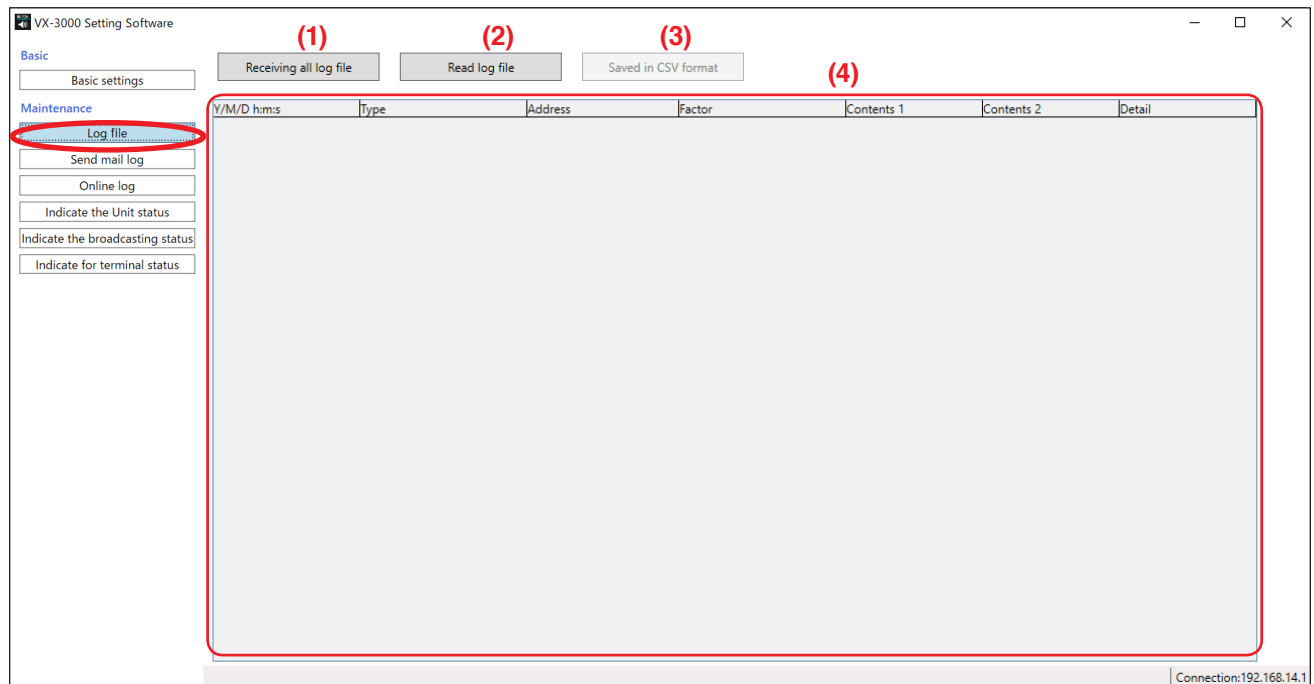
In this case, close the screen by clicking the OK button, check cable connections, then retry from **Step 1**.



## 7. MAINTENANCE

### 7.1. Log File

Clicking the Log file button displays the screen below.



**(1) [Receiving all log file] button**

Reads the Log data from the unit.

**(2) Read log file button**

Reads the Log data from a file (file extension: .v3l).

**(3) [Saved in CSV format] button**

Saves the Log data in a CSV file.

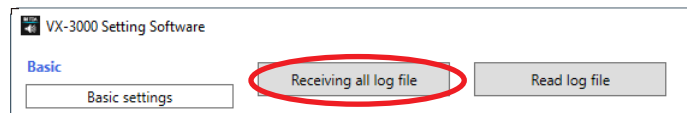
**(4) Log display**

Displays the Log contents.

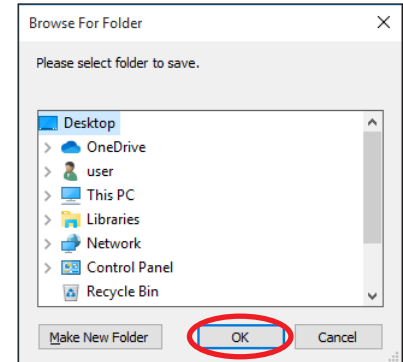
### 7.1.1. Receiving all log file

An entire log file can be read and saved from the VX-3000F (ID: 0) with the procedures below.

**Step 1.** Click the [Receiving all log file] button.



A "Browse For Folder" dialog is displayed.



**3**

**Step 2.** Select the folder where the log file is to be saved.

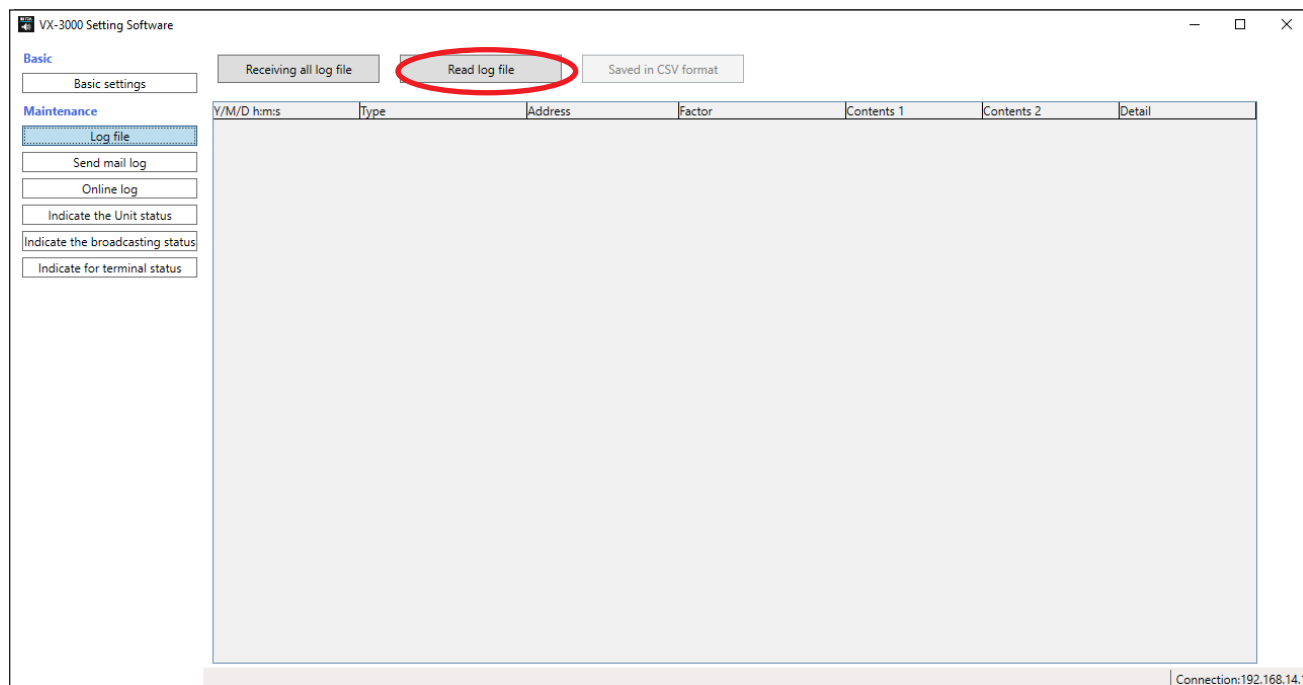
**Step 3.** Click the OK button.  
A complete dialog is displayed.

**Step 4.** Click the OK button.  
The "Browse For Folder" dialog is closed after the log data has been saved.

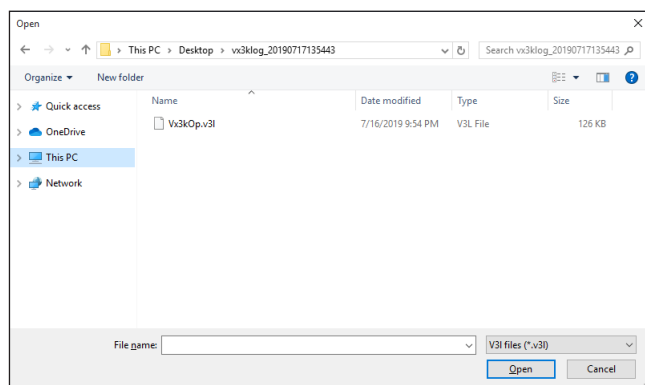
### 7.1.2. Reading the log file

When log data is not displayed on the log file screen or when it is desirable to display other log data stored in a different folder from that in which the currently displayed log data is stored, read the log file (.v3l) in the following procedure.

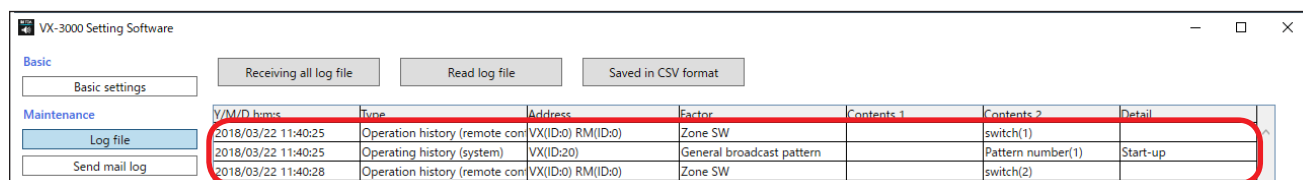
**Step 1.** Click the Read log file button on the log file screen.



An "Open" dialog is displayed.



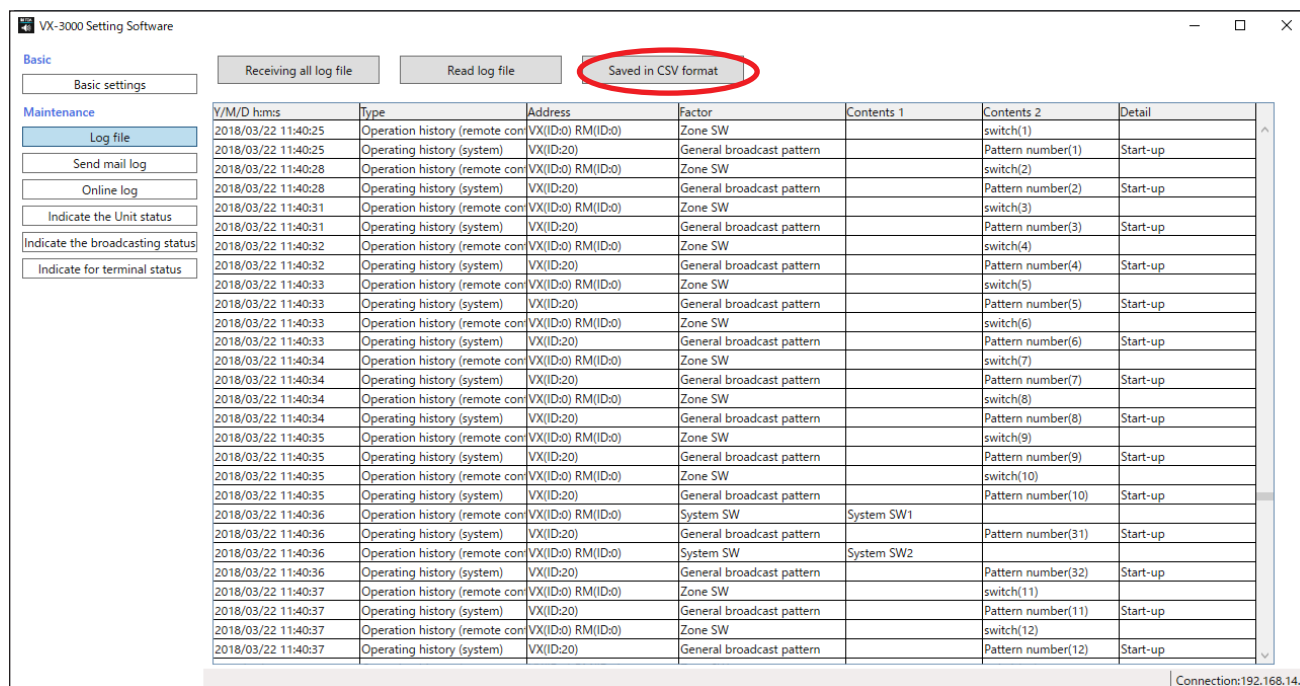
**Step 2.** Designate the folder where the log file is saved, and select the file, then click the Open button.  
Log data is displayed on the log display.



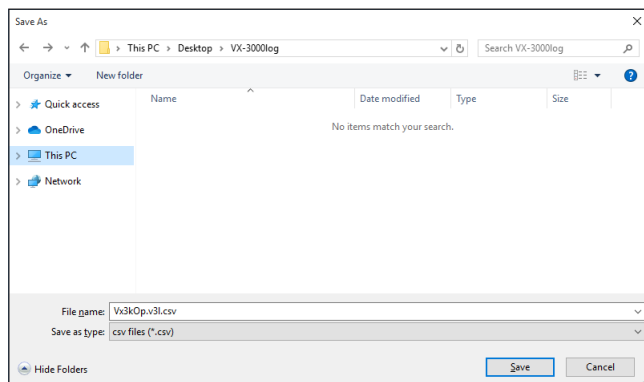
### 7.1.3. Saving the log file

Log data displayed on the log file display screen can be saved as a csv-format file in the following procedure.

**Step 1.** Click the [Saved in CSV format] button.



A "Save As" dialog is displayed.



**Step 2.** Select the folder where the log file is to be saved.

**Step 3.** Set a "File name."

#### Note

The filename "(Read filename).csv" is set by default. When changing the filename, be sure to add a filename extension (csv).

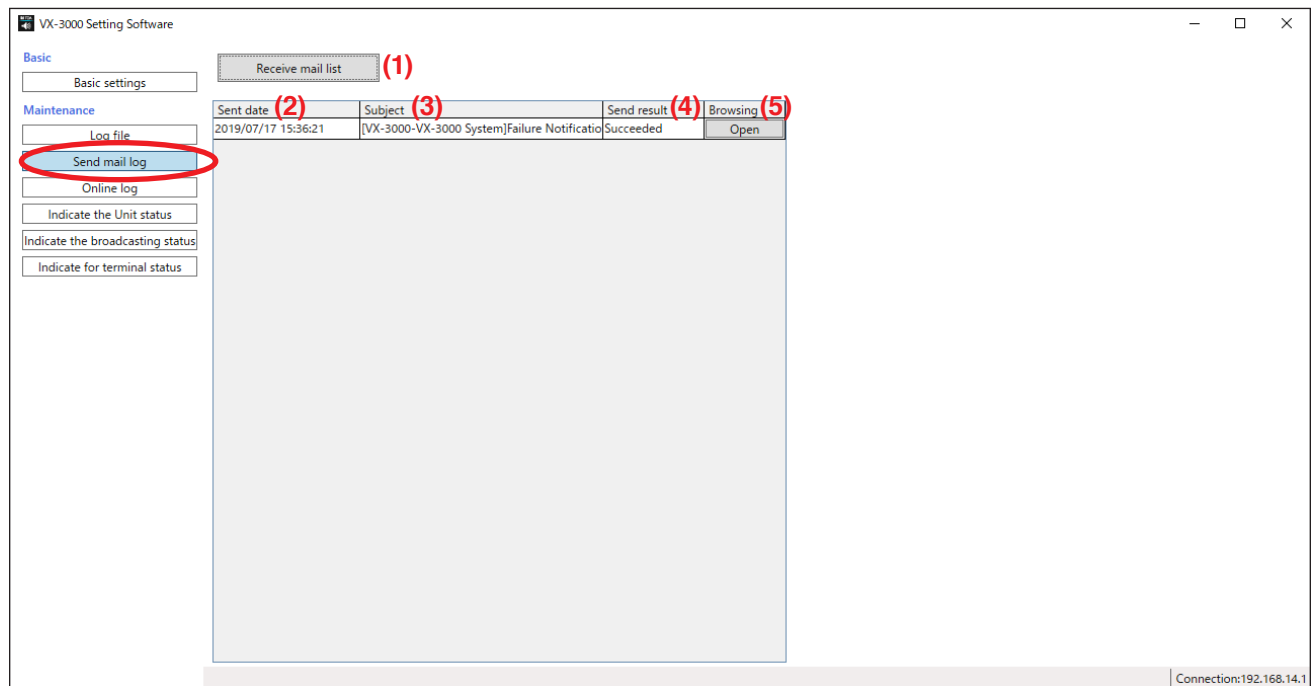
Example: 0605 log file.csv

**Step 4.** Click the Save button.

The "Save as" dialog is closed after the log data has been saved.

## 7.2. Send Mail Log

Clicking the Send mail log button displays the screen below.



### (1) Receive mail list button

Receives the list of the Failure detection e-mails transmitted from the VX-3000F (ID: 0).  
Up to 100 e-mail histories are retained.

### (2) Sent date

Displays the transmission dates of the failure detection e-mails.

### (3) Subject

Displays the titles of the failure detection e-mails.

### (4) Send result

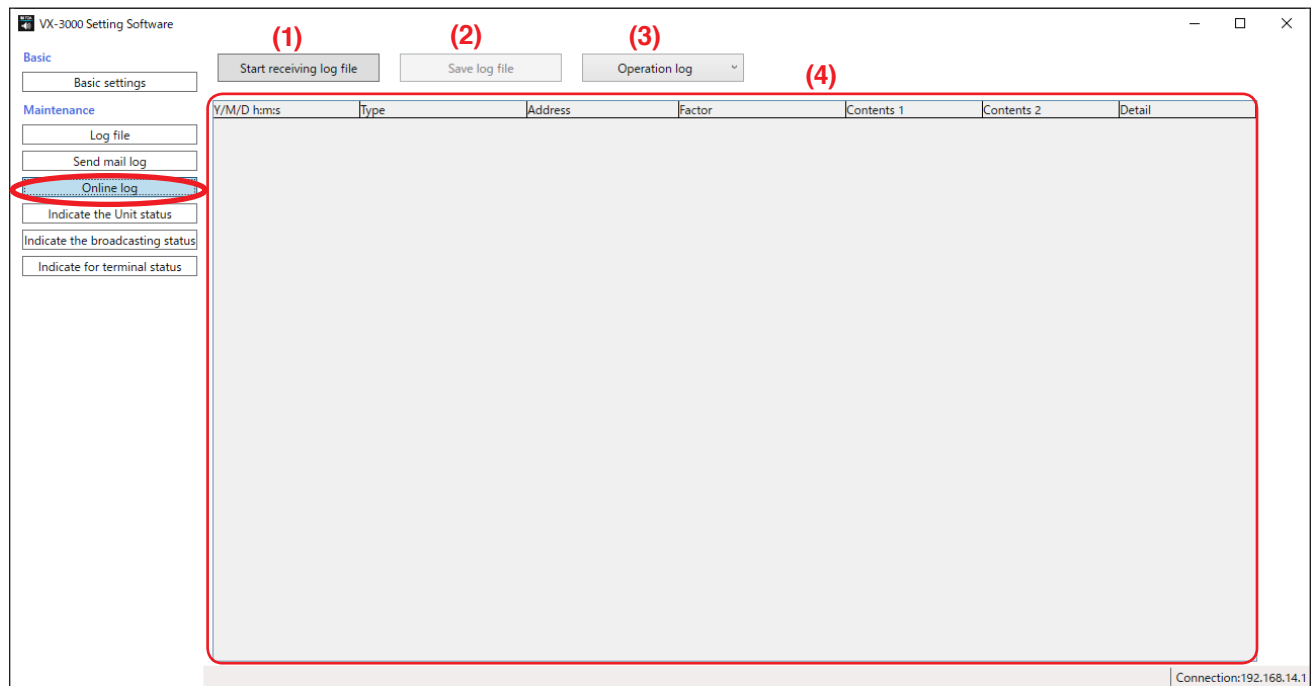
Displays the transmission results of the failure detection e-mails.

### (5) Browsing

You can view the contents of the transmitted failure detection e-mails.

## 7.3. Online Log

Clicking the Online log button displays the screen below.



**(1) [Start receiving log file]/[Stop] button**

Reads the Log data from the connected VX-3000F (ID: 0).

**(2) Save log file button**

Saves the Log data into a file.

**(3) Log selection pull-down list**

Select the type of Log to display from either the operation log or the error log.

**(4) Log display**

Displays the Log contents.



### 7.3.1. Online log confirmation

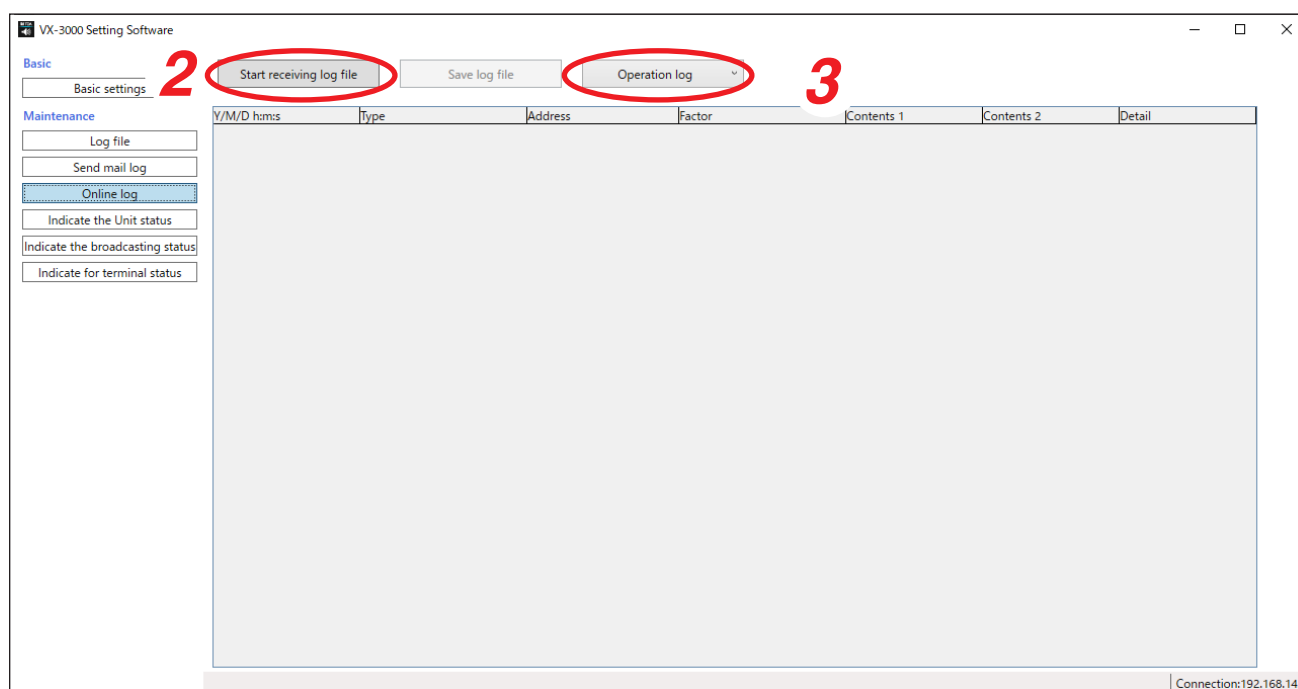
The VX-3000F system operation and error logs can be confirmed in real time.

**Step 1.** Establish communications between the VX-3000F and the PC installed with the VX-3000F Setting software.

For the procedure for establishing communications, see [p. 10](#).

The "Connection" indication is displayed in the lower right corner of the screen after the connection is completed.

**Step 2.** Click the [Start receiving log file] button.



Logs are displayed in time sequence. The [Start receive log file] button changes to the [Stop] button. If a new operation or failure takes place, the logs are automatically updated and displayed.

#### Tip

To cause a log display update to pause, click the [Stop] button.  
The [Stop] button changes to the [Start receive log file] button.  
To display the log again, click the [Start receive log file] button.

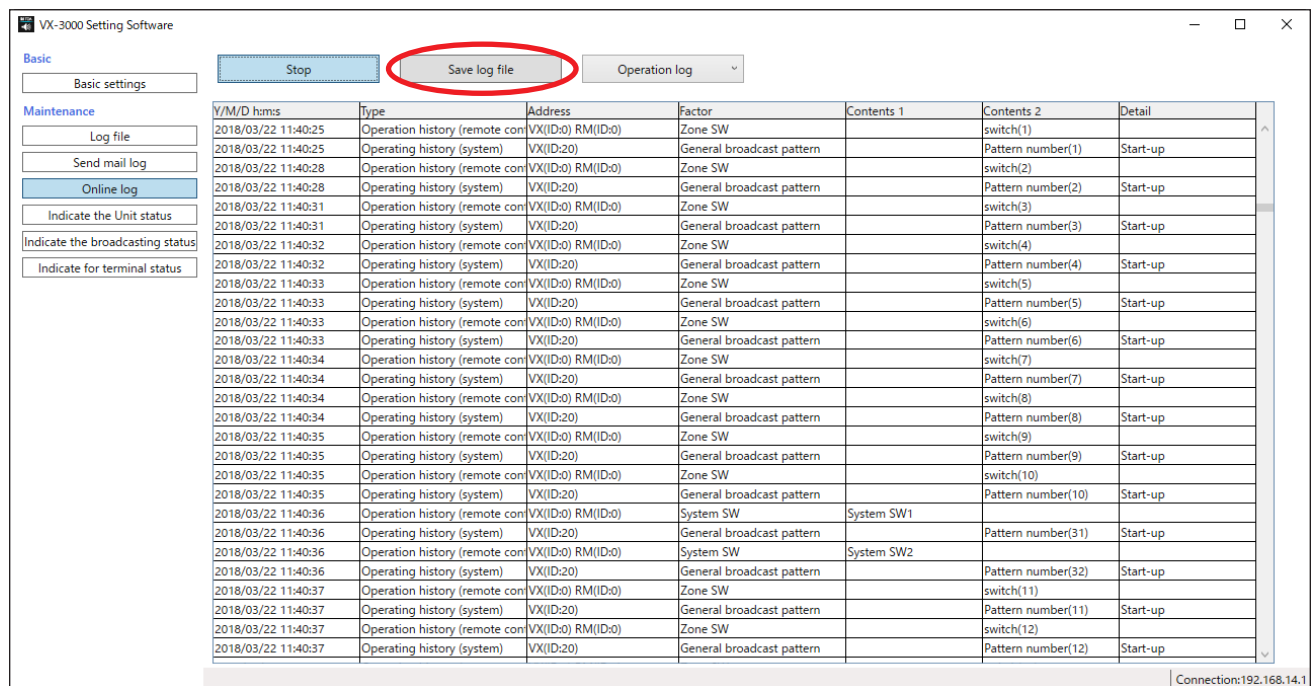
**Step 3.** Select the type of Log to display.

Select the type from either the operation log or the error log using the Log selection pull-down list.

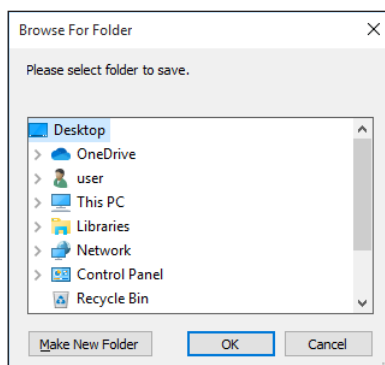
### 7.3.2. Saving log files acquired online

Log files displayed on the online log screen can be saved as a csv-format file in the following procedure.

**Step 1.** Click the [Save log file] button.



A "Browse For Folder" dialog is displayed.



**Step 2.** Select the folder where the log file is to be saved.

**Step 3.** Click the OK button.

## 7.4. Indicate the Unit Status

Clicking the [Indicate the Unit status] button displays the "Indicate the Unit status" screen, allowing the following information to be confirmed in real time:

- Individual unit's setting and connection status
- Individual unit's operation mode and failure status
- Failure status of amplifiers, speaker lines and power supply

### 7.4.1. System status display confirmation

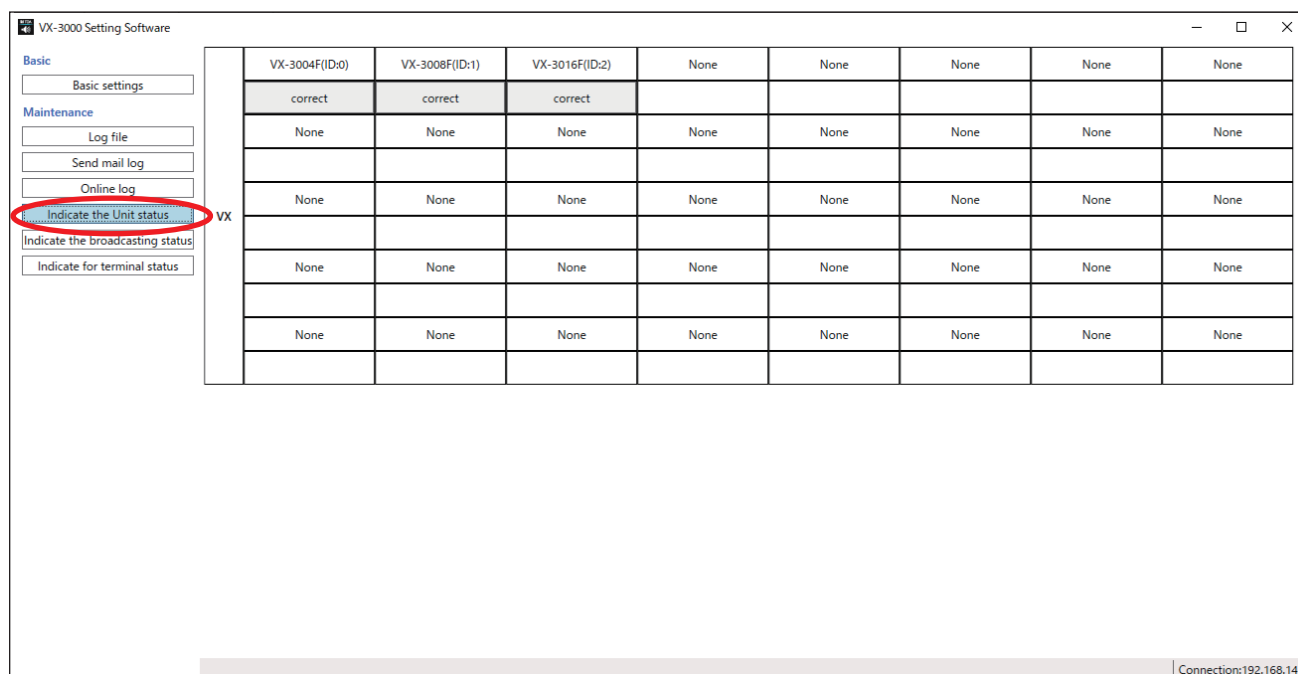
**Step 1.** Establish communications between the VX-3000F and the PC installed with the VX-3000 Setting software.

For the procedure for establishing communications, see [p. 10](#).

The "Connection" indication is displayed in the lower right corner of the screen after the connection is completed.

**Step 2.** Click the [Indicate the Unit status] button.

The "Indicate the Unit status" screen is displayed.



After information receipt is completed, the current system status is displayed on the "Indicate the Unit status" screen.

After the system status information has been acquired, the latest system status is automatically updated and displayed.

	VX-3004F(ID:0)	VX-3008F(ID:1)	VX-3016F(ID:2)	None	None	None	None	None
VX	correct	error	error					
	None	None	None	None	None	None	None	None
	None	None	None	None	None	None	None	None
	None	None	None	None	None	None	None	None
	None	None	None	None	None	None	None	None

Connection:192.168.14.1

#### 7.4.2. System status display explanation

Each unit's status is displayed on its corresponding button, and clicking on a button displays its detailed information screen. (Buttons for units that have not been set for connection cannot be selected.)

Two or more detailed information screens can be displayed (for the number of units set for connection).

The system status can be updated even when the detailed information screen is displayed.

Presence or absence of error is displayed on the button by each unit.

When some error occurs in the unit, the corresponding button becomes red and an "error" indication is displayed on it.

### 7.4.3. Detailed display of each unit status

Clicking the VX-3000F button on the "Indicate the Unit status" screen displays the VX-3000F unit status screen.

VX-3000 Setting Software

VX-3008F(ID:1)

**Unit configuration**

Type	Configuration	Current	Status
	VX-3008F	VX-3008F	correct

**Rm configuration**

	Configuration	Current	Status
RM 0	RM-300X	RM-300X	correct
RM 1	None	None	correct
RM 2	None	None	correct
RM 3	None	None	correct
RM 4	None	None	correct
RM 5	None	None	correct
RM 6	None	None	correct
RM 7	None	None	correct

**Amp configuration**

	Configuration	Current	Status
AMP 1	500W	None	difference
AMP 2	None	None	correct
AMP 3	None	None	correct

**Unit failure status**

	Configuration	Status	Jump
Inside of the unit	Used	Normal	<a href="#">Detail</a>
Control input fault	Unused	-	<a href="#">Detail</a>
Extension input	Unused	-	<a href="#">Detail</a>
Standby Input	Unused	-	<a href="#">Detail</a>
DS	Unused	-	<a href="#">Detail</a>
SV AMP	Used	Normal	<a href="#">Detail</a>
SP	Unused	-	<a href="#">Detail</a>

**RM failure status**

	Configuration	Status	Jump
RM 0	Unused	-	<a href="#">Detail</a>
RM 1	Unused	-	<a href="#">Detail</a>
RM 2	Unused	-	<a href="#">Detail</a>
RM 3	Unused	-	<a href="#">Detail</a>
RM 4	Unused	-	<a href="#">Detail</a>
RM 5	Unused	-	<a href="#">Detail</a>
RM 6	Unused	-	<a href="#">Detail</a>
RM 7	Unused	-	<a href="#">Detail</a>

**AMP failure status**

	Configuration	Status	Jump
AMP 1	Unused	-	<a href="#">Detail</a>
AMP 2	Unused	-	<a href="#">Detail</a>
AMP 3	Unused	-	<a href="#">Detail</a>

Clicking the Detail button displays the detailed screen for each item as shown below.

VX-3000 Setting Software

VX-3008F(ID:1) > Fault status > Inside of the unit

	Configuration	Status	Jump
Connection fault	Used	Normal	
Unit fault	Used	Normal	
Model abnormality	Used	Normal	
Setting data abnormality	Used	Normal	
Sound source data abnormality	Used	Normal	
Analog link connector	Unused	-	
Unit power abnormality	Unused	-	
LAN connector A	Unused	-	
LAN connector B	Unused	-	

## 7.5. Indicate the Broadcasting Status

Clicking the [Indicate the broadcasting status] button displays the screen below.

The broadcast status of the VX-3000 system such as broadcast pattern being activated and audio signal input/output status can be confirmed online.

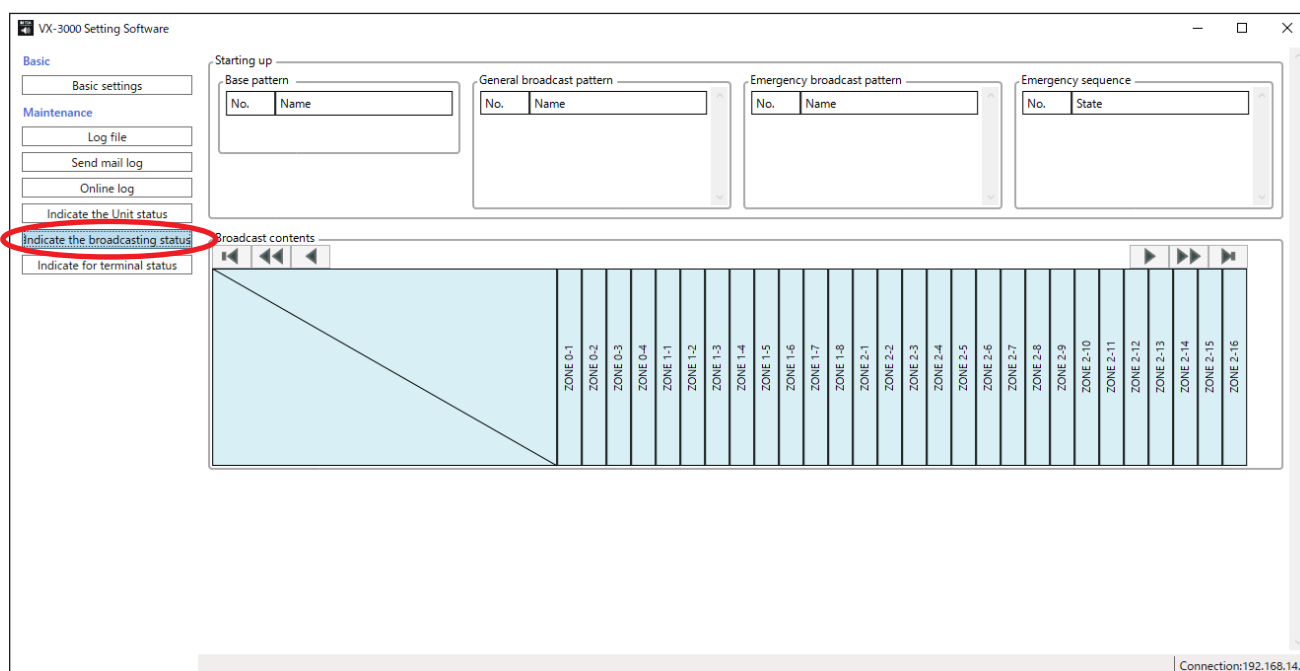
**Step 1.** Establish communications between the VX-3000F and the PC installed with the VX-3000 Setting software.

For the procedure for establishing communications, see [p. 10](#).

The "Connection" indication is displayed in the lower right corner of the screen after the connection is completed.

**Step 2.** Click the [Indicate the broadcasting status] button.

The "Indicate the broadcasting status" screen is displayed.



Broadcasting status data are automatically acquired.

After the data have been received, the current status is displayed on the "Indicate the broadcasting status" screen.

After the broadcast status data have been received, the latest system status is automatically updated and displayed.

**VX-3000 Setting Software**

**Basic**

- Basic settings

**Maintenance**

- Log file
- Send mail log
- Online log
- Indicate the Unit status
- Indicate the broadcasting status**
- Indicate for terminal status

**Starting up**

**Base pattern**

No.	Name
1	General pattern 1

**General broadcast pattern**

No.	Name
1	General pattern 1

**Emergency broadcast pattern**

No.	Name
1	Emergency pattern 1

**Emergency sequence**

No.	State
1	Phase 1

**Broadcast contents**

	ZONE 0-1	ZONE 0-2	ZONE 0-3	ZONE 0-4	ZONE 1-1	ZONE 1-2	ZONE 1-3	ZONE 1-4	ZONE 1-5	ZONE 1-6	ZONE 1-7	ZONE 1-8	ZONE 2-1	ZONE 2-2	ZONE 2-3	ZONE 2-4	ZONE 2-5	ZONE 2-6	ZONE 2-7	ZONE 2-8	ZONE 2-9	ZONE 2-10	ZONE 2-11	ZONE 2-12	ZONE 2-13	ZONE 2-14	ZONE 2-15	ZONE 2-16
EVNo. 1	●				●	●	●	●	●	●	●	●	●	●	●	●	●	●	●	●	●	●	●	●	●	●	●	●
Message 1																												
Alert	●				●	●	●	●	●	●	●	●	●	●	●	●	●	●	●	●	●	●	●	●	●	●	●	

Connection: 192.168.14.1

## [Broadcasting status display explanation]

### (1) Starting up

- **Base pattern, General broadcast pattern, Emergency broadcast pattern**  
Each pattern being activated by way of the control input or with the Remote microphone's function key is displayed.
- **Emergency sequence**  
Emergency sequence being executed by the currently activated Emergency broadcast pattern is displayed.

### (2) Broadcast contents

Displays which sound source is broadcast to which zone by which activation pattern.  
The output status and type of the sound source being broadcast can be confirmed.

## 7.6. Indicate for Terminal Status

The VX-3000 system control input and output statuses can be confirmed in real time.

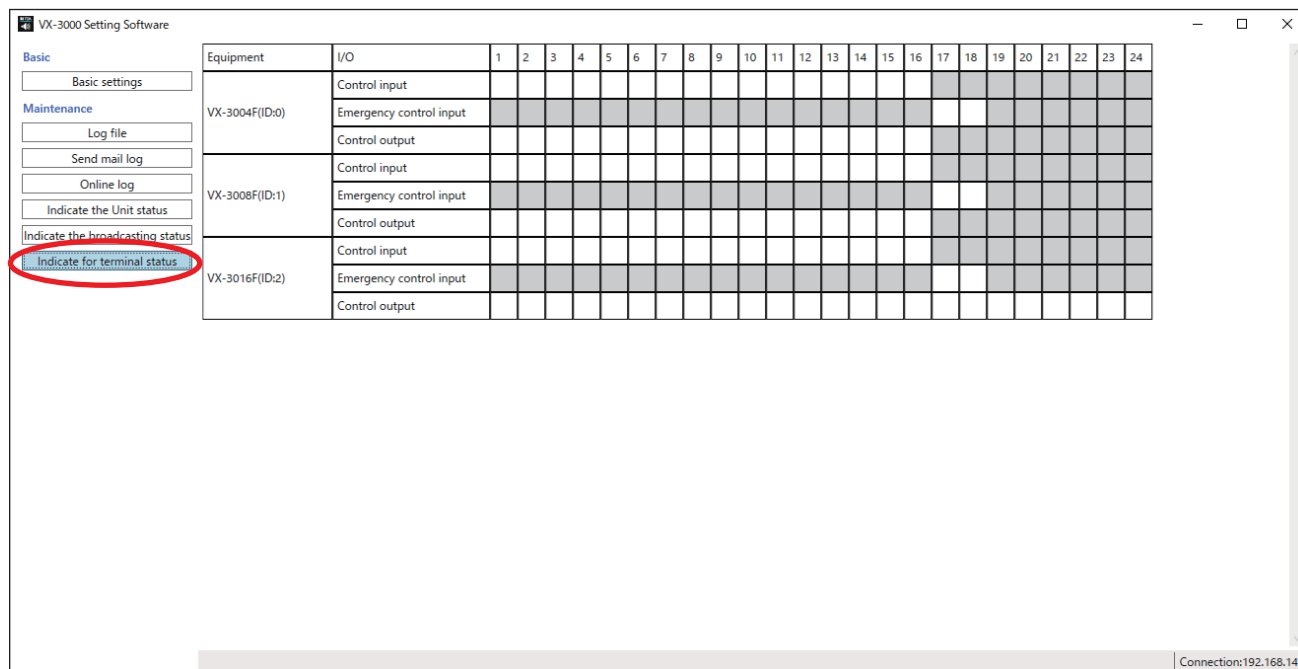
**Step 1.** Establish communications between the VX-3000F and the PC installed with the VX-3000 Setting software.

For the procedure for establishing communications, see [p. 10](#).

The "Connection" indication is displayed in the lower right corner of the screen after the connection is completed.

**Step 2.** Click the [Indicate for terminal status] button.

The "Indicate for terminal status" screen is displayed.



Control input and output status data are automatically acquired.



After the data have been received, the current status is displayed on the "Indicate for terminal status" screen.

After the control input/output status data have been received, the latest system status is automatically updated and displayed.

VX-3000 Setting Software

Basic

Basic settings

Maintenance

Log file

Send mail log

Online log

Indicate the Unit status

Indicate the broadcasting status

Indicate for terminal status

Equipment	I/O	1	2	3	4	5	6	7	8	9	10	11	12	13	14	15	16	17	18	19	20	21	22	23	24
VX-3004F(ID:0)	Control input																								
	Emergency control input																								
	Control output	●																							
VX-3008F(ID:1)	Control input																								
	Emergency control input																								
	Control output																								
VX-3016F(ID:2)	Control input																								
	Emergency control input																								
	Control output																								

Connection:192.168.14.1

[Control input/output status display explanation]

The contact currently in active status is displayed with ● mark.

